

**Trophic transfers from seagrass meadows subsidize diverse marine and terrestrial consumers**

Journal:	<i>Ecosystems</i>
Manuscript ID:	ECO-07-0208.R2
Types:	Original Article
Date Submitted by the Author:	05-Mar-2008
Complete List of Authors:	Heck, Jr., Kenneth; Dauphin Island Sea Lab Carruthers, Tim; University of Maryland Center for Environmental Science, Integration and Application Network Duarte, Carlos; Instituto Mediterraneo de Estudios Avanzados Hughes, A. Randall; University of California, Bodega Marine Laboratory Kendrick, Gary; University of Western Australia, School of Plant Biology Orth, Robert; Virginia Institute of Marine Science Williams, Susan; University of California, Bodega Marine Laboratory
Key Words:	seagrass, connectivity, trophic subsidy, coral reefs, deep sea, consumers

***Reviewer 1 – Responses to specific comments:***

- p. 7, lines 3-4:* The information in the papers cited only contained weights and not estimates of C or detailed budgets. Therefore, we can only report the information as stated originally.
- p. 7, lines 34-35:* Area was approximately 1.5 ha and it has been added to the text.
- p. 7, lines 39-51:* This sentence has been rewritten to improve clarity.
- p. 8, lines 32-37:* We have softened the language by removing ‘must have’.
- p. 12, lines 37-44:* Language changed and “...produced by the juveniles” has been added.
- p. 15, lines 15-16:* We have added context by comparing values with beaches not containing wrack.
- p. 17, lines 23-27:* We changed language by substituting “organisms” for production, as suggested.
- p. 18, lines 4-11:* Softened language by substituting “are likely to have” for “must have” in the original.

***Reviewer 2 – Responses to specific comments:***

***The paper focuses on export....***

We have added language that reviews what is known [primarily information in the Marba et al. (2006) paper] on pages 7-8.

***1. Imports to seagrass beds....***

The  $\delta^{13}\text{C}$  information says seagrass is the source for bears in Alaska (McConnaughey and McRoy 1979), mud flats (Connolly et al. 2005), mangroves (Hemminga et al. 1994), the deep sea (Suchanek et al. 1984) but we agree more details from other locations would be useful.

***2. A comparison of the magnitude of exports...***

We agree this would be valuable but obtaining area-specific rates for marshes, mangroves and seagrasses does not seem to be possible. That is, we do not believe there is sufficient quantitative information to do this on a global scale.

***Figure 1. is a good illustration....***

Our purpose was to discuss transfers from seagrass meadows. Therefore, we did not focus on transfers from other habitats to the seagrass meadows.

***Most of the references....***

We have not corrected these.

# **Trophic transfers from seagrass meadows subsidize diverse marine and terrestrial consumers**

**Short Title: Seagrass subsidizes marine and terrestrial consumers**

Kenneth L. Heck, Jr. <sup>1\*</sup>, Tim J.B. Carruthers<sup>2</sup>, Carlos M. Duarte<sup>3</sup>, A. Randall Hughes<sup>4</sup>,  
Gary Kendrick<sup>5</sup>, Robert J. Orth<sup>6</sup>, Susan W. Williams<sup>4</sup>

<sup>1\*</sup>Dauphin Island Sea Lab and University of South Alabama, 101 Bienville Boulevard,  
Dauphin Island, AL 36528, USA, Telephone: 251-861-2284; Fax: 251-861-7540;  
kheck@disl.org

<sup>2</sup>Integration and Application Network, the University of Maryland Center for  
Environmental Science, Cambridge, MD 21613, USA

<sup>3</sup>Instituto Mediterraneo de Estudios Avanzados, IMEDEA, CSIC-Univ. Illes Balears, C/  
Miquel Marques 21, 07190 Esporles, (Islas Baleares), Spain

<sup>4</sup>Bodega Marine Laboratory, University of California, 2099 Westside Road, Bodega Bay,  
CA 94923, USA

<sup>5</sup>School of Plant Biology, University of Western Australia, 35 Stirling Highway, Crawley  
6009, WA, AU

<sup>6</sup>Virginia Institute of Marine Science, College of William and Mary, Gloucester Point,  
VA 23062, USA.

1  
2  
3  
4  
5  
6  
7  
8  
9  
10  
11  
12  
13  
14  
15  
16  
17  
18  
19  
20  
21  
22  
23  
24  
25  
26  
27  
28  
29  
30  
31  
32  
33  
34  
35  
36  
37  
38  
39  
40  
41  
42  
43  
44  
45  
46  
47  
48  
49  
50  
51  
52  
53  
54  
55  
56  
57  
58  
59  
60

**Abstract**

In many coastal locations, seagrass meadows are part of a greater seascape that includes both marine and terrestrial elements, each linked to the other via the foraging patterns of consumers (both predators and herbivores), and the passive drift of seagrass propagules, leaves, roots and rhizomes, and seagrass-associated macroalgal detritus. With seagrasses declining in many regions, the linkages between seagrass meadows and other habitats are being altered and diminished. Thus, it is timely to summarize what is known about the prevalence and magnitude of cross-habitat exchanges of seagrass-derived energy and materials, and to increase awareness of the importance of seagrasses to adjacent and even distant habitats. To do so we examined the literature on the extent and importance of exchanges of biomass between seagrass meadows and other habitats, both in the form of exported seagrass biomass as well as transfers of animal biomass via migration. Data were most abundant for Caribbean coral reefs and Australian beaches, and organisms for which there were quantitative estimates included Caribbean fishes and North American migratory waterfowl. Overall, data from the studies we reviewed clearly showed that seagrass ecosystems provide a large subsidy to both near and distant locations through the export of particulate organic matter and living plant and animal biomass. The consequences of continuing seagrass decline thus extend far beyond the areas where seagrasses grow.

**Key Words:** seagrass, connectivity, trophic subsidy, consumers

## Introduction

Ecologists increasingly recognize that ecosystems are open and interconnected. Both the passive and active transport of materials via advective processes, propagule dispersal and active foraging migrations inextricably link many ecological assemblages across boundaries. Movement of nutrients, detritus, prey, and consumers between ecosystems can have major effects on food web structure and productivity, especially in places with little or no in situ primary production (e.g., caves, mountaintops, central ocean gyres, and the deep sea--see Vetter 1994, 1998; Polis and Strong 1996; Persson and others 1996; Rose and Polis 1998).

The high degree of cross-habitat biomass and energy transfer in many marine ecosystems has long been recognized. For example, as Beck and others (2001) noted, some of the earliest examples of marine cross-habitat transfers were reported nearly a century ago. These studies emphasized taxa with complex life cycles, such as portunid crabs, penaeid shrimp and a number of species of finfish, whose larvae were transported from offshore spawning areas to estuaries where they subsequently metamorphosed and grew rapidly before returning offshore to adult habitats in the fall (Hay 1905; Hildebrand and Schroeder 1928). The concept of the entire estuary as a “nursery” for juvenile finfish and shellfish pervaded the literature for decades and was considered a law (Gunter 1967). As research expanded, especially studies with more detailed and sophisticated investigations of larval transport, habitat use and predator-prey dynamics, a heightened appreciation for the importance of shallow vegetated habitats such as marshes and seagrass meadows as “nurseries” developed, primarily because of the much greater

densities of juvenile finfish and shellfish that vegetated habitats supported (Turner 1977; Orth and others 1984, Minello 1999).

Seagrass meadows have very high levels of primary production, owing to the high turnover of seagrass leaves themselves and their associated epiphytes (Orth and others 2006). In addition, they provide habitat for a diverse assemblage of invertebrates and fishes (Williams and Heck 2001). Thus, there are a variety of potential pathways linking seagrasses and other marine and terrestrial habitats. For example, although living seagrass leaves are commonly consumed, they remain uneaten in many areas, at least in recent times (see below), and directly enter the detrital pool. Seagrass and seagrass-associated macroalgal detritus can then be transported passively by currents and waves (Robertson and Lucas 1983; Hemminga and others 1994), in some cases over extensive distances (Wolff 1980; Suchanek and others 1984). On route, and where ultimately deposited, they provide habitat structure and trophic subsidy (Thresher and others 1992; Ochieng and Erftemeijer 1999; see review by Mateo and others 2006). Accumulations of detritus can support consumers in areas such as deep sea canyons (Vetter 1994, Vetter and others 1998), where detrital inputs are likely to be most important because primary production is low and habitat structure is limited (Kirkman and Kendrick 1997).

Living seagrass leaves are also an important pathway for habitat linkages, providing an important source of energy for both residents (e.g., sea urchins, turtles, dugongs and manatees) and transients (e.g., waterfowl) in coastal food webs in the Caribbean and Mediterranean Seas, as well as in the Indian and Pacific Oceans (summarized in Valentine and Heck 1999; Valentine and Duffy 2006). The abundance and secondary production of small seagrass-associated invertebrates and fishes rival or

1  
2  
3 exceed the highest estimates reported from other marine communities (Valentine and  
4 Heck 1993). However, the current understanding is that algal, not seagrass, carbon is the  
5  
6 source of energy for most of these small seagrass-associated animals. This means that  
7  
8 the primary production of algae growing on and among seagrass leaves is regularly  
9  
10 consumed by small animals and then becomes available for export in the biomass of  
11  
12 intermediate trophic levels (e.g., isopods, decapods, gastropods and small fishes, see  
13  
14 Orth and others 1984; Greenway 1995; Williams and Heck 2001; Figure 1) that are  
15  
16 consumed by larger finfish that visit the seagrass meadows to forage. Thus, the potential  
17  
18 for the transfer of secondary production from seagrass meadows to higher order  
19  
20 predators is very high, and we include information on this trophic pathway when  
21  
22 possible.  
23  
24  
25  
26  
27  
28

29 The decline of seagrasses in many regions of the earth (Orth and others 2006),  
30  
31 combined with losses of large consumers (Jackson and others 2001), has undoubtedly  
32  
33 altered linkages between marine habitats. Thus, it is timely to summarize the prevalence  
34  
35 and magnitude of various cross-habitat exchanges, to increase awareness of the  
36  
37 importance of seagrasses to adjacent and even distant habitats, and to outline pertinent  
38  
39 questions for future research. Whereas many of the examples we discuss are known by  
40  
41 seagrass biologists and estuarine ecologists, to date they have not been considered as a  
42  
43 whole and their broader implications assessed. Here we examine the magnitude and  
44  
45 importance of exchanges of biomass between seagrass meadows and other oceanic  
46  
47 habitats and between seagrass meadows and terrestrial habitats, both in the form of  
48  
49 exported seagrass biomass as well as transfers of animal biomass between habitats.  
50  
51  
52  
53  
54  
55 Habitats for which the best data exist are Caribbean coral reefs, and organisms for which  
56  
57  
58  
59  
60

there are quantitative estimates include Caribbean fishes and migratory waterfowl. In addition, a relatively small number of studies have quantified the export of seagrass detritus in other locations around the world and we report the magnitude of these estimates. We also report on the limited number of studies that have estimated the export of dissolved organic matter from seagrass leaves, roots and rhizomes. Data from the studies we review clearly show that seagrass ecosystems provide a large energy and nutrient subsidy to near and distant locations through the export of particulate and dissolved organic matter and of living plant and animal biomass. The consequences of seagrass decline thus can extend far beyond the areas where seagrasses grow. Surprisingly, this has only recently been recognized by marine conservation biologists who now have begun to argue for the inclusion of seagrass meadows in Marine Protected Areas (MPAs) designed to preserve coral reefs in the Western Atlantic Ocean (Grober-Dunsmore and others 2007).

**Export of Seagrass Detritus and Dissolved Organic Matter**

Despite abundant qualitative evidence for the trophic importance of detrital export from seagrass meadows, relatively few quantitative estimates of the magnitude of detrital fluxes exist, and these exist primarily for meadows in North America, the Caribbean and Europe (Figure 2). This is likely due to the difficulty in quantifying fluxes in open systems such as those in which most seagrass meadows occur (Mateo and others 2006). Existing estimates of export range from 0 to 100% of total production, and from 10 to 60 % of leaf production (summarized by Mateo and others 2006; Table 1), depending on physical processes and bottom topography, with a mean value of around 15% of net primary production exported. The largest fluxes measured have been

between seagrass meadows and nearby sandy beaches. Supply rates of seagrass detritus have been estimated by Ochieng and Erftemeijer (1999) and Coupland and others (2007) to range from 30-400 kg wet weight per m of beach per year. In the Spanish Mediterranean deposits ranged from 18 to 500 kg DW. M<sup>-2</sup>, which, depending on the time required for detrital decomposition, could represent as much as 50% of the meadow's annual dry weight production (Mateo and others 2003; Mateo and others 2006). Export of seagrass detritus occurs in other areas as well, and has been documented in temperate eelgrass beds in North Carolina (USA) by Bach and others (1986) and in Caribbean seagrass meadows by Zieman and others (1979), who found that only a small amount of turtlegrass (*Thalassia testudinum*) was exported from the study site, while more than 75% of manatee grass (*Syringodium filiforme*) was exported (Table 1). Although these studies did not quantify the contribution of seagrass detritus to destination habitats in the way Mateo and others (2003, 2006) did, they nevertheless showed substantial export of seagrass production from source meadows. In addition, quantitative monthly estimates of seagrass export from a Panamanian back reef of approximately 1.5 ha ranged from 37-294 kg mo<sup>-1</sup> over a 15 month period (Kilar and Norris 1988), indicating a large export from shallow water to the open waters of the Caribbean Sea (Table 1).

Seagrass detrital export also plays an important role in the global ocean carbon cycle. While seagrass carbon contributes only around 20% of the total amount of carbon buried by marine vascular plants, the absolute mass represents an enormous transfer of organic carbon and nutrients to the coastal ocean that can and does fuel the growth and reproduction of a wide array of consumers (Duarte and others 2005).

Seagrasses excrete dissolved organic carbon (DOC) from living leaves, rhizomes and roots, and leach DOC from decomposing tissues. A review of the what little is known about rates of DOC release from seagrasses by Marba and others (2006) showed that DOC release varies seasonally, and reaches a maximum in summer (Ziegler and Benner 1999). Most studies indicate that seagrass meadows are net sources of DOC to both the water column and sediment pore waters (Marba and others 2006), and that microbial activity is enhanced in both the water column and in the rhizosphere (Holmer and others 2001) by DOC released from seagrass tissues. However, the relative importance of seagrass-derived DOC in nutrient cycling and secondary production has not yet been quantified, although it seems likely to play an important role in coastal biogeochemistry (Marba and others 2006).

**Seagrass Meadows Have Strong Links to Other Coastal Habitats**

In assembling information on the frequency and magnitude of biomass transfers between seagrass meadows and other coastal habitats, we first reviewed studies in Gillanders and others (2003), which focused on connections between juvenile and adult habitats of mobile marine fishes and invertebrates. To gather recent papers we also searched the Web of Science from 2000 to 2006 using the key words provided in Gillanders and others (2003) as well as seagrass connectivity, seagrasses-(other habitat). In addition, we relied heavily on our collective library resources to supplement our literature searches. Although many qualitative examples of connectivity between seagrass meadows and other habitats are reported in the literature, it is somewhat surprising that there are only a few quantitative estimates of the transfer of consumer

biomass from seagrass meadows to other habitats (Gillanders 2006). The global loss of seagrass meadows dictates that efforts to develop such estimates should be a priority for seagrass researchers.

### ***Coral Reefs***

The structure and function of coral reef communities is enhanced when they are adjacent and connected to seagrass beds. Early studies of coral reef ecosystems found that most reef fishes were carnivores whose biomass was 3–4 times greater than that of herbivorous fishes (Bakus 1969; Goldman and Talbot 1976; Polunin 1996). Such inverted food webs suggested that predators must have foraged in other habitats to meet their nutritional needs. Early studies of the feeding habits of fishes demonstrated the trophic connectivity between reefs and seagrass meadows, which has been best documented in the western Atlantic (e.g., Randall 1965, 1967); however, similar connectivity is also known from other areas, suggesting it might be a general phenomenon. For example, many coral reef fish species have long been known to forage daily on seagrasses, algae and small invertebrates and fishes in adjacent seagrass meadows (Ogden 1980). Many reef herbivores that shelter on western Atlantic coral reefs forage on algae and seagrasses in the adjacent seagrass meadows, and many predatory fishes leave the reef and forage on the very large secondary production in nearby structurally simpler seagrass meadows (Meyer and others 1983; Zieman and others 1984; McAfee and Morgan 1996; Figure 1a). Most common are predatory species in the family Haemulidae (grunts) and herbivores in the family Labridae (parrotfishes), but many other taxa, including those not usually thought of as relying on seagrass meadows, such as moray eels (Muraenidae) and squirrelfish (Holocentridae), forage in

seagrass meadows at night (Heck and Weinstein 1989). These migrations of foraging animals thus constitute a major energetic linkage between coral reefs and seagrass meadows and contribute to maintaining high fish biomass on coral reefs adjacent to seagrass meadows.

The fish-mediated connectivity between seagrass meadows and coral reefs can also result in a significant enhancement of the growth rates of dominant reef-building corals. Caribbean grunts, upon return to their resting spots on the reef, provide an important trophic subsidy to corals, whose growth is increased by nutrients deposited in the form of feces from grunts (see Meyer and Schultz 1985a,b). It is likely that green turtles, which feed in seagrass meadows but move to coral reefs to sleep between foraging bouts, also mediate a similar enhancement, although this has not yet been documented.

In addition, there are many species of larger predators, including the gray (*Lutjanus griseus*), lane (*L. synagris*) and dog (*L. jocu*) snappers, as well as groupers such as the Nassau (*Epinephelus striatus*) and gag (*Mycteroperca microlepis*) that often use western Atlantic seagrass meadows as juvenile habitat, and after reaching sizes of around 0.3 m standard length (SL) take up residence on reefs, thereby transferring the biomass they have accumulated from seagrass meadows to reefs (Starck and Schroeder 1971; Coleman and others 1999; Figure 1a).

These examples demonstrate that coral reefs are strongly linked trophically to seagrass meadows when they exist in proximity. This trophic connectivity was verified by Nagelkerken and colleagues, who used stable isotope analyses supplemented by visual censuses to show that near several islands in the southern Caribbean juvenile coral reef

fish foraged in seagrass meadows as well as mangrove channels (Nagelkerken and van der Velde 2004a,b). In addition, they showed that adult fish abundances, species richness and composition were positively associated with this connectivity and the presence of adjacent seagrass meadows (Nagelkerken and others 2001; Nagelkerken and others 2002; Figure 1a). Similar patterns also appear to hold for reefs adjacent to seagrass meadows in East Africa (Dorenbosch and others 2005; Lugendo and others 2005; Dorenbosch and others 2006). Thus, as Randall (1965) noted more than four decades ago, and Grober-Dunsmore and others (2007) recently confirmed, reefs in close contact with seagrass meadows support predatory fish biomasses far in excess of those reefs that are isolated from seagrass meadows.

#### ***Mangrove forests, marshes, mud flats, and oyster reefs***

Similar to their strong association with coral reefs, seagrass meadows are also linked through foraging fishes to other coastal wetlands such as mangroves in tropical regions and salt marshes in temperate regions. For example, Marguillier and others (1997) used stable isotope analyses to assess the food resources of a suite of carnivorous fishes and concluded that even though mangrove creeks in Kenya are rich in detritus and secondary production, creek-dwelling animals were doing the bulk of their foraging on prey in seagrass meadows seaward of the mangrove creek mouths. Seagrass carbon was also identified isotopically in mangrove forests in Eastern Africa, indicating a reverse flux of materials from the subtidal seagrass meadows to the intertidal mangrove forest (Hemminga and others 1994).

Although less well studied than some tropical regions, temperate seagrass beds are connected to a variety of habitats through animal migrations and trophic subsidies of

seagrass detritus. For example, juvenile fish leave temperate intertidal salt marshes to forage in subtidal seagrass meadows, and when seagrass meadows are adjacent to salt marshes, fish biomass is 90% greater than when unvegetated mud flats are adjacent to salt marshes (Irlandi and Crawford 1997; Figure 1b). Similarly, oysters reefs adjacent to seagrass meadows supported higher piscivorous fish biomass than oyster reefs isolated on mud flats (Grabowski and others 2005), and Micheli and Peterson (1999) found that predation rates on clams associated with oyster reefs were greater when reefs were adjacent to seagrass meadows, which provided a protected corridor for crabs to move between oyster reefs and salt marshes. In addition, the commercially important blue crab, *Callinectes sapidus*, settles in U.S. Atlantic and Gulf coast seagrass meadows as post-larvae, and subsequently migrates to other estuarine habitats in early juvenile stages, but returns to seagrass meadows to mate and molt as adults (Orth and van Montfrans 1990). In this way, carbon is exchanged among seagrass meadows and other habitats as blue crabs forage, grow and reproduce.

Seagrass meadows have also been shown to be connected to mudflats in South Australia, where isotopic evidence demonstrated that on inshore mudflats shrimp and polychaetes assimilated seagrass carbon (Connolly and others 2005). Also in Australia, Thresher and others (1992) found isotopic evidence that seagrass detritus was a common and important source of carbon for larvae of the blue grenadier (*Macruronus novaezealandiae*) off the coast of Tasmania. Thus, evidence from tropical and temperate regions and from three continents provides a multitude of examples of trophic transfers and faunal interactions between seagrass meadows and adjacent shallow water habitats.

**Continental Shelves**

Seagrass meadows also export large amounts of animal and plant biomass to offshore areas, and these subsidies have important consequences for some major fisheries. For example, commercially valuable penaeid shrimp populations annually transfer very large amounts of biomass from seagrass meadows, when large juveniles leave seagrass nursery grounds for the adjacent continental shelf in tropical and subtropical latitudes (Figure 1a). A good example is the pink shrimp (*Farfantepenaeus duorarum*), whose fishery in south Florida (USA) is based almost entirely on the export of shrimp from the 14,622 km<sup>2</sup> of seagrass nursery grounds in Florida Bay (Erhardt and others 2001). The export of juvenile shrimp results in an annual commercial harvest on the offshore Tortugas shrimp ground of between 2300 and 4500 metric tons. This translates to an estimate of from 0.16 to 0.31 metric tons km<sup>-2</sup> of shrimp produced from the juveniles exported from the seagrass meadows of Florida Bay to the commercial fishery. The harvest of this single species not only supports a commercial fishery, but must be only a small portion of the total export from the Florida Bay seagrass meadows. Also well known are the annual migrations of a number of species of young-of-the-year fish, such as the southern U.S. seagrass dominant, the pinfish (*Lagodon rhomboides*), that are spawned on the shelf, move inshore as larvae to settle in seagrass meadows and later move offshore in truly vast numbers at the end of the growing season (Hansen 1969; Dacey 1985; Figure 2b).

In another example, the migrations of anadromous Pacific salmon (*Oncorhynchus* spp.) form a 'conveyor belt' of nutrients between freshwater and the ocean (Schindler and others 2003). During their migrations, different species of salmon spend variable amounts of time in estuaries, where feeding during both the in-and out-bound parts of

their journey can be critical to their survival. Juvenile chum (*O. keta*), pink (*O. gorbuscha*), and chinook (*O. tshawytscha*) salmon are particularly linked to shallow subtidal areas of estuaries where they are caught in eelgrass (*Zostera marina*) beds and feed heavily on epibenthic crustaceans. These crustaceans in turn derive nutrition from eelgrass and associated epiphytes and macroalgae, as determined by their carbon and nitrogen isotopic signatures (Simenstad and Wissmar 1985, Simenstad and others 1982; Fujiwara and Highsmith 1997).

### ***Deep-Sea***

A large biomass of seagrass detritus can make its way to the deep sea, and in this vast area of low food and shelter availability, constitutes a permanent, major source of food and domicile for consumers in otherwise uniform surroundings (reviewed by Wolff 1980; Figure 1a). Although algae are also exported from seagrass and other nearshore communities, they have more labile organic matter than seagrasses and decompose before reaching the deep-sea. In contrast, many photographs of the deep-sea floor reveal seagrass detritus, indicating that an abundance of seagrass detritus reaches these depths. Although seagrass detritus is highly refractory by the time it reaches the deep-sea, it is still consumed by deep-sea benthos, as confirmed by carbon isotope signatures (Suchanek and others 1984). Although not yet identified, specialized gut microbiota in deep-sea benthos might break down the cellulose and/or fix nitrogen, thereby enriching the nutritional value of the seagrass detritus (Waterbury and others 1983; Distel and Roberts 1997). The contribution of seagrass detritus to deep sea food webs has been quantified in a series of papers by Vetter (1994, 1998). Although the connectivity between nearshore seagrass meadows and the deep-sea is not widely recognized, it is a

compelling example of how environmental impacts on coastal seagrasses can have far-reaching consequences.

## **Seagrass Meadows also have Strong Links to Terrestrial Habitats**

### ***Beaches and Near-shore Areas***

Seagrass detritus that washes up on the shore not only provides habitat and food for invertebrate consumers, but also may indirectly support fish, wading and migratory birds and some mammals (Figure 1b). In some locations, vast amounts of seagrass detritus wash up upon beaches. Eventually much of this detritus is returned to the water with subsequent tides or storms, and is ultimately deposited elsewhere (see Kirkman and Kendrick 1997; Hyndes and Lavery 2005). Thus, the same mass of seagrass detritus can contribute nutrients and energy to multiple habitats. While on the beaches, seagrass wrack provides an important refuge from predation for highly vulnerable macroinvertebrates (Lenanton and others 1982; Lenanton and Caputi 1989). Smaller invertebrates, including a diverse group of flies, beetles, amphipods and isopods, help breakdown and process the seagrass detritus and are in turn prey for shore birds such as the Australian silver gull, hooded plover and ruddy turnstone (Kirkman and Kendrick 1997). The link between subtidal primary production and populations of coastal and wading birds can be strong, as demonstrated by the positive correlation between the quantity of beach wrack and the abundance of two species of shore birds in California (Bradley and Bradley 1993). Although more targeted research is needed to better quantify the scale of the seagrass subsidy to beach food webs, we do know that seagrass wrack deposits are metabolic hot spots. For example, CO<sub>2</sub> fluxes in Western Australia wrack deposits may reach 19 micromoles m<sup>-2</sup>s<sup>-1</sup> (with mean fluxes in wrack of nearly

3x that of adjacent beach sand without wrack), owing to the activity of dense assemblages of microbes and invertebrates (Coupland and others, 2007). In addition, isotopic analyses conducted in several Western Australian locations revealed that seagrass carbon is also present in shallow sandy substrates where it is assimilated by harpacticoid copepods that are, in turn, ingested by small shore-zone fishes (Lenanton and others 1982; Lenanton and Caputi 1989).

A number of semi-aquatic and terrestrial mammals are known to feed on detrital seagrass accumulations in the intertidal zone (see review by Carlton and Hodder 2003). For example, ground squirrels have been observed visiting eelgrass wrack and removing leaf material (Roest 1993), and quokkas, small western Australian marsupials, have been observed to feed on *Posidonia* spp. seeds that become stranded on the shore (G. Kendrick, Personal Observation). Another example of the transfer of seagrass production to terrestrial mammals is stable isotope evidence that bears (*Ursos arctica*) in Alaska fed on crabs that in turn had fed on seagrass tissues (McConnaughey and McRoy 1979)

Of perhaps greater significance are the semi-terrestrial animals that live on land for much of the time but forage in coastal waters. Creed (2004) documented the consumption of widgeongrass (*Ruppia maritima*) by capybara, a South American rodent, and found that nearly 20% of the widgeon grass meadow being observed showed evidence of capybara grazing. Another rodent, the nutria (*Myocaster copyu*) has also been reported to consume widgeon grass in the southern U.S. (Kantrud 1991).

Quantification of the role of semi-aquatic seagrass herbivores from more areas needs to

be done, but it is likely that consumption rates will be large in areas where these mammals have not been hunted or trapped extensively.

### ***Inland Areas***

Inbound salmon can transfer marine nutrients far into terrestrial ecosystems, sometimes reaching bears, eagles, and trees (Schindler and others 2003). However, the best documented and most extensive ocean- to- inland transfers of seagrass biomass involve migratory waterfowl. Seagrasses provide forage for enormous numbers of geese, ducks and swans, which increase their energy reserves by feeding heavily on seagrasses in preparation for their flight to breeding grounds that may be half a continent away (see review by Ganter 2000).

Among the best known examples are brant geese (*Branta bernicla*), which occur in both North America and Northern Europe, and have been studied extensively, but many other species, including coots (*Fulica atra*), swans (*Cygnus* spp.) and dabbling ducks (*Anas* spp.) also feed heavily on seagrasses (Ganter 2000; Figure 1b). Waterfowl provide connectivity between seagrass and inland areas along flyways that span both the Atlantic and Pacific coasts of North America. The significance of this linkage became very evident after the massive mortality of eelgrass during the 1920s 'wasting disease' epidemic. Data on the ecology of brant geese, whose diets were predominantly eelgrass (approximately 85% of stomach contents), were available from many study areas before the disease-induced disappearance of most eelgrass from North America and Europe. After the eelgrass decline geese were forced to begin foraging in upland areas, behavior that had never before been observed (Cottam and others 1944; Ganter 2000). After eelgrass recovery in the 1950's many Brant geese populations returned to feeding on

1  
2  
3 eelgrass and according to Ganter (2000) it is clear that eelgrass "...is of outstanding  
4 importance to this species". Existing evidence suggests that brant geese can remove a  
5 large proportion of intertidal eelgrass biomass, but they appear to have relatively minor  
6 effects on subtidal eelgrass (Ganter 2000).  
7  
8  
9  
10  
11

12 Movement of seagrass and animal propagules on the feet or in the guts of animals  
13 that forage in seagrass meadows is one pathway for transfer of organisms from seagrass  
14 meadows that has yet to be measured. In freshwater, Figuerola and Green (2002)  
15 showed that bird-mediated transport of invertebrate propagules can be important in  
16 structuring assemblages of benthic invertebrates in the recipient habitat. Whether this  
17 happens in marine systems is unknown, but large seagrass-associated animals (e.g.,  
18 waterfowl, turtles, manatees and dugongs and large fish) could be vectors for such  
19 dispersal.  
20  
21  
22  
23  
24  
25  
26  
27  
28  
29  
30

31 **Broken Connections**  
32

33 Seagrass meadows are under increasing pressure from human activities (Orth and  
34 others 2006), and several lines of evidence suggest that the important connections  
35 between seagrass beds and other marine and terrestrial habitats have been or are  
36 undergoing alterations. It seems likely that the current rate of waterfowl grazing is  
37 dramatically lower today than it was before extensive hunting greatly reduced all types of  
38 waterfowl (see Valentine and Duffy 2006 for a review). For example, nearly a century  
39 ago it was estimated that waterfowl grazing removed approximately 20% of the eelgrass  
40 biomass from a Danish eelgrass bed (Peterson 1918; see also Thayer and others 1975),  
41 even though a hundred years ago European waterfowl populations might well have been  
42 substantially lower than they were before harvest by humans. The eelgrass wasting  
43  
44  
45  
46  
47  
48  
49  
50  
51  
52  
53  
54  
55  
56  
57  
58  
59  
60

1  
2  
3 disease epidemic in the 1930's resulted in a reduction of 90% of the populations of two  
4  
5 North American Atlantic brant subspecies, and lack of recovery of eelgrass forced this  
6  
7 species to shift its foraging to salt marshes and agricultural vegetation (Cottam and others  
8  
9 1944). Along the eastern Pacific flyway, combined populations of brant subspecies have  
10  
11 been reduced dramatically since the 1950s and their wintering feeding grounds have  
12  
13 shifted from the U.S. Pacific Northwest to Baja California, concomitant with a reduction  
14  
15 in eelgrass habitat along the U.S. coast (Pacific Flyway Council, 2002, Moore and others  
16  
17 2004).

18  
19  
20  
21 The effects of human fishing and hunting in reducing the number of large  
22  
23 vertebrate grazers such as waterfowl, turtles and mammals can in part explain the spatial  
24  
25 variability in seagrass grazing (Jackson 1997; Valentine and Duffy 2006). The loss of  
26  
27 major grazers means that large amounts of seagrass detritus are often available for export  
28  
29 to other habitats, although the amount of export is also a function of the coastal  
30  
31 geomorphology and hydrodynamics of any given location (Figure 1b). This is supported  
32  
33 by the only quantitative estimates of the effect of large herbivores on detrital abundance,  
34  
35 which appear in Thayer and others (1984). They show nearly a hundredfold difference in  
36  
37 the amount of detrital nitrogen in ungrazed seagrass meadows in St. Croix, U.S. Virgin  
38  
39 Islands, compared to nearby meadows that were regularly grazed by green turtles.  
40  
41  
42  
43  
44

45  
46 As with most ecological data compilations, the majority of studies considered  
47  
48 here was carried out in North America, Europe and Australia. Thus, there is an obvious  
49  
50 need for studies to be done in Africa, South America and the Indo-Pacific region.  
51  
52 However it is clear that in the tropical and temperate regions that have been studied,  
53  
54 seagrass meadows are tightly connected to many other habitats and that exports from  
55  
56  
57  
58  
59  
60

seagrass meadows elevate the productivity of other habitats, as noted for the Western Atlantic coral reefs, temperate Australian beaches and the deep sea. Although quantification of materials exported from seagrass meadows is relatively rare and highly variable, available estimates indicate that, on average, some 15% of seagrass production is exported from meadows (Mateo and others 2006). In terms of the seagrass carbon that is buried, estimates are on the order of  $111 \text{ Tmol C y}^{-1}$ , a value that represents about 20% of the marine vascular plant carbon buried in the ocean (Duarte and others 2005).

Other points that come through clearly are that preserving single habitat types that are strongly connected to others is unlikely to produce the desired results. This is especially true for Caribbean coral reefs, whose ability to support diverse and abundant of consumers is greatly enhanced by exports from nearby seagrass meadows (Nagelkerken and others 2001, 2002; Nagelkerken and van der Velde 2004b; Valentine and Heck 2005). Thus, establishing Marine Protected Areas (MPAs) that contain only coral reefs without including the adjacent seagrass meadows will not successfully sustain the reef-associated fishes or the rest of the coral reef flora and fauna (see Grober-Dunsmore and others 2007).

It is also important to recognize that modern day seagrass beds are likely exporting much more energy in the form of detritus than in the past, when a great deal more export was in the form of animal biomass produced by the consumption of living seagrass and algal tissues (Figure 1a). This hypothesis needs further testing, which could be done by comparing the detrital dynamics in similar seagrass meadows that still contain macroherbivores, such as manatees, green turtles and dugongs, with those that do not. However, it is also likely that the regional and global flux of detritus from seagrass

meadows to other habitats has been substantially reduced by the widespread loss of seagrass meadows (Orth and others 2006).

Finally, although we have focused on seagrass exports to neighboring systems, it is clear that seagrass meadows also receive inputs from adjacent habitats such as salt marshes, mangroves, and rocky shores. Such inputs can be large, as most clearly shown for seagrass meadows in temperate Western Australia, which receive large amounts of drifting algae that has broken loose from rocky reefs (Wernberg and others 2006). Although it is possible that seagrass systems are merely transmitting a subsidy received from elsewhere, our opinion is that seagrass meadows are indeed exporting excess biomass. However, quantitative data regarding both inputs into and exports out of seagrass meadows are needed to evaluate more fully the interconnections between seagrasses and other habitats. Furthermore, such data would allow us to compare the relative importance of seagrass meadow exports with exports from other coastal systems (e.g., salt marshes; Valiela and others 2004).

In summary, we have provided examples of how seagrass meadows are part of a greater seascape that contains both marine and terrestrial elements, each linked to the other via the foraging of consumers (both predators and herbivores), and the drift of seagrass and seagrass-associated algal detritus. Where grazing of seagrass is low, export of detrital seagrass leaves can be seasonally high (Harrison 1989; Cebrian and Duarte 1998). Trophic subsidies from seagrass meadows especially assist in maintaining the abundance of coral reef fishes (Valentine and Heck, 2005), and seem to be of great importance in the food- and habitat- poor deep sea, although they also are of importance in a variety of other habitats. The on-going global decline of seagrass meadows (Orth

and others 2006) means that the linkages between seagrass meadows and other habitats are being altered and diminished, and that the consequences of seagrass decline extend far beyond the seagrass meadows themselves.

**Acknowledgments**

We thank our colleagues in the Global Seagrass Trajectories Working Group, which is supported by the National Center for Ecological Analysis and Synthesis, a Center funded by NSF (Grant #DEB-00-72909), the University of California at Santa Barbara, and the State of California. We also thank Dr. Just Cebrian, who kindly provided the information contained in Table 1, Dottie Byron whose comments significantly improved the manuscript and Carolyn Wood who prepared the final draft of this manuscript. This is Bodega Marine Laboratory, University of California-Davis Contribution Number XXXX, DISL Contribution Number\_\_\_\_\_, and VIMS Contribution Number\_\_\_\_\_.

**Literature Cited**

Bach SD, Thayer GW, LaCroix MW. 1986. Export of detritus from eelgrass (*Zostera marina*) beds near Beaufort, North Carolina, USA. Marine Ecology Progress Series 28: 265-278.

Bakus GJ. 1969. Energetics and feeding in shallow marine waters. International Review Of General And Experimental Zoology 4: 275-369.

Beck MW, Heck KL Jr, Able KW, Childers DL, Eggleston DB, Gillanders BM, Halpern B, Hays CG, Hoshino K, Minello TJ, Orth RJ, Sheridan PF, Weinstein MP. 2001.

- The identification, conservation and management of estuarine and marine nurseries for fish and invertebrates. *Bioscience* 51: 633-641.
- Bradley, RA, Bradley DW. 1993. Wintering shorebirds increase after kelp (*Macrocystis*) recovery. *Condor* 95: 372-376.
- Carlton JT, Hodder J. 2003. Maritime mammals: terrestrial mammals as consumers in marine intertidal communities. *Marine Ecology Progress Series* 256: 271-286.
- Cebrian J, Duarte CM. 1998. Patterns in leaf herbivory on seagrasses: the importance of the specific leaf growth-rate. *Aquatic Botany* 60: 67-82.
- Cebrian J, Pedersen MF, Kroeger KD, Valiela I. 2000. Fate of production of the seagrass *Cymodocea nodosa* in different stages of meadow formation. *Marine Ecology Progress Series* 204: 119-130.
- Coleman FC, Koenig CC, Eklund AM, Grimes CB. 1999. Management and conservation of temperate reef fishes in the grouper-snapper complex of the southeastern United States. Musick JA, editor. *Life in the Slow Lane*. American Fisheries Society Symposium. 23 p.
- Connolly RM, Gorman D, Guest MA. 2005. Movement of carbon among estuarine habitats and its assimilation by invertebrates. *Oecologia* 144: 684-691.
- Cottam C, Lynch JJ, Nelson AL. 1944. Food habits and management of American sea brant. *Journal of Wildlife Management* 8: 36-56.
- Coupland, GT, Duarte, CM and Walker, DI. 2007. High metabolic rates in beach cast communities. *Ecosystems* 10: 1341-1350.
- Creed JC. 2004. Capybara (*Hydrochaeris hydrochaeris* Rodentia: Hydrochaeridae): a mammalian seagrass herbivore. *Estuaries* 27: 197-200.

- Dacey GH. 1985. Synopsis of biological data on the pinfish, *Lagodon rhomboides* (Pisces: Sparidae). NOAA Technical Report, National Marine Fisheries Service, No. 23. 32p.
- Distel DL, Roberts SJ. 1997. Bacterial endosymbionts in the gills of the deep-sea wood-boring bivalves *Xylophaga atlantica* and *Xylophaga washingtona*. Biological Bulletin 192: 253-261.
- Dorenbosch M, Grol MGG, Nagelkerken I, van der Velde G. 2005. Distribution of coral reef fishes along a coral reef-seagrass gradient: edge effects and habitat segregation. Marine Ecology Progress Series 299: 277-288.
- Dorenbosch M, Grol MGG, Nagelkerken I, van der Velde G. 2006. Different surrounding landscapes may result in different fish assemblages in east African seagrass beds. Hydrobiologia 563:45-60.
- Duarte CM, Middelburg JJ, Caraco N. 2005. Major role of marine vegetation on the oceanic carbon cycle. Biogeosciences 2: 1-8.
- Eggleston DB, Grover JJ, Lipcius RN. 1998. Ontogenetic diet shifts in Nassau grouper: Trophic linkages and predatory impact. Bulletin of Marine Science 63: 111-126.
- Erhardt NM, Legault CM, Restrepo VR. 2001. Density-dependent linkage between juveniles and recruitment for pink shrimp (*Farfantepenaeus duorarum*) in southern Florida. ICES Journal of Marine Science 58: 1100-1105.
- Figuerola J, Green AJ. 2002. Dispersal of aquatic organisms by waterfowl: a review of past research and priorities for future studies. Freshwater Biology 47: 483-494.

- Fujiwara M, Highsmith RC. 1997. Harpacticoid copepods: potential link between inbound adult salmon and outbound juvenile salmon. *Marine Ecology Progress Series* 158:05-216.
- Ganter B. 2000. Seagrass (*Zostera* spp.) as food for brent geese (*Branta bernicla*): an overview. *Helgol Marine Research* 54: 63-70.
- Gillanders BW. 2006. Seagrass, Fish and Fisheries. . Larkum, AWD, Orth, RJ, Duarte, C, editors. *Seagrasses: Biology, Ecology and Conservation*. Springer, The Netherlands. p. 503-536.
- Gillanders BW, Able KW, Brown JA, Eggleston DB, Sheridan PF. 2003. Evidence of connectivity between juvenile and adult habitats for mobile marine fauna: an important component of nurseries. *Marine Ecology Progress Series* 247: 281–295.
- Goldman B, Talbot FH. 1976. Aspects of the ecology of coral reef fishes. Jones OA, Endean R, editors. *Biology and geology of coral reefs*, Vol. III. Academic Press, New York. p125-163.
- Grabowski JH, Hughes AR, Kimbro DL, Dolan MA. 2005. How habitat setting influences restored oyster reef communities. *Ecology* 86: 1926-1935.
- Greenway M. 1995. Trophic relationships of macrofauna within a Jamaican seagrass meadow and the role of the echinoid *Lytechinus varietatus* (Lamarck). *Bulletin of Marine Science* 56: 719-736.
- Grober-Dunsmore R, Frazer TK, Lindberg WJ, Beets J. 2007. Reef fish and habitat relationships in a Caribbean seascape: the importance of reef context. *Coral Reefs* 26: 201-216..

- Gunter G. 1967. Some relationships of estuaries to the fisheries of the Gulf of Mexico. Lauff GH, editor. Estuaries. Washington D.C.: American Association for the Advancement of Science. p621-638.
- Hansen DJ. 1969. Food, growth, reproduction and abundance of pinfish, *Lagodon rhomboides*, and Atlantic croaker, *Micropogon undulatus*, near Pensacola, Florida 1963-1965. Fisheries Bulletin 68: 135-156.
- Harrison PG. 1989. Detrital processing in seagrass systems: a review of factors affecting decay rates, remineralization and detritivory. Aquatic Botany 23: 263-288.
- Hay WP. 1905. The life history of the blue crab, *Callinectes sapidus*. U.S. Bureau of Fisheries Report.
- Heck KL Jr, Weinstein MP. 1989. Feeding habits of juvenile reef fishes associated with Panamanian seagrass meadows. Bulletin of Marine Science 45: 629-635.
- Hildebrand SF, Schroeder WC. 1928. Fishes of Chesapeake Bay. 33(1).
- Hemminga MA, Slim FJ, Kazungu J, Ganssen GM, Nieuwenhuize J, Kruyt NM. 1994. Carbon outwelling from a mangrove forest with adjacent seagrass beds and coral reefs (Gazi Bay, Kenya). Marine Ecology Progress Series 106: 291-301.
- Holmer, M, Andeson FO, Nielsen SL, Henricus, TSB. 2001. The importance of mineralization based on sulfate reduction for nutrient regeneration in tropical seagrass sediments. Aquatic Botany 70: 29-38.
- Hyndes GA, Lavery PS. 2005. Does transported seagrass provide an important trophic link in unvegetated, nearshore areas? Estuarine Coastal and Shelf Science 63: 633-643.

- Irlandi EA, Crawford MK. 1997. Habitat linkages: the effect of intertidal saltmarshes and adjacent subtidal habitats on abundance, movement, and growth of an estuarine fish. *Oecologia* 110: 222-230.
- Jackson J. 1997. Reefs since Columbus. Proceedings of the 8th International Coral Reef Symposium 1: 97-106.
- Jackson JBC, Kirby MX, Berger WH, Bjorndal KA, Botsford LW, Bourque BJ, Bradbury RH, Cooke R, Erlandson J, Estes JA, Hughes TP, Kidwell S, Lange CB, Lenihan HS, Pandolfi JM, Peterson CH, Steneck RS, Tegner MJ, Warner RR. 2001. Historical overfishing and the recent collapse of coastal ecosystems. *Science* 293: 629-638.
- Josselyn MN, Cailliet G, Niesen T, Cowen R, Hurley A, Conner J, Hawes S. 1983. Composition, export and faunal utilization of drift vegetation in the Salt River submarine canyon. *Estuarine Coastal and Shelf Science* 17: 447-465.
- Kantrud HA. 1991. Widgeon grass (*Ruppia maritima*): a literature review. U.S. Fish & Wildlife Service, Fish & Wildlife Research 10. 58p.
- Kilar JA, Norris JN. 1988. Composition, export and import of drift vegetation on a tropical, plant-dominated, fringing-reef platform (Caribbean Panama). *Coral Reefs* 7: 93-103.
- Kirkman H, Reid DD. 1979. A study of the role of the seagrass *Posidonia australis* in the carbon budget of an estuary. *Aquatic Botany* 7: 173-183.
- Kirkman H, Kendrick, GA. 1997. Ecological significance of commercial harvesting of drifting and beach-cast macro-algae and seagrasses in Australia: A review. *Journal of Applied Phycology* 9: 311-326.

- Koenig CC, Coleman FC 1998. Absolute abundance and survival of juvenile gags in sea grass beds of the Northeastern Gulf of Mexico. Transactions of the American Fisheries Society 127: 44-55.
- Lenanton RCJ, Roberson AI, Hansen JA. 1982. Nearshore accumulations of detached macrophytes as nursery areas for fish. Marine Ecology Progress Series 9: 51-57.
- Lenanton RCJ, Caputi N. 1989. The roles of food supply and shelter in the relationship between fishes, in particular *Cnidogobius macrocephalus* (Valenciennes), and detached macrophytes in the surf zone of sandy beaches. Journal of Experimental Marine Biology and Ecology 128: 165-176.
- Lugendo BR, Pronker A, Cornelissen I, de Groene A, Nagelkerken I, Dorenbosch M, van der Velde G, Mgaya YD. 2005. Habitat utilization by juveniles of commercially important fish species in a marine embayment in Zanzibar, Tanzania. Aquatic Living Resources 18: 149-158.
- Marba, N, Holmer M, Gacia, E, Barron, C. 2006. Seagrass beds and coastal biogeochemistry. Larkum, AWD, Orth, RJ, Duarte, C, editors. Seagrasses: Biology, Ecology and Conservation. Springer, The Netherlands. p. 135-157.
- Marguillier S, van der Velde G, Dehairs F, Hemminga MA, Rajagopal S. 1997. Trophic relationships in an interlinked mangrove-seagrass ecosystem as traced by  $\delta^{13}\text{C}$  and  $\delta^{15}\text{N}$ . Marine Ecology Progress Series 151: 115-121.
- Mateo MA, Romero J. 1997. Detritus dynamics in the seagrass *Posidonia oceanica*: elements for an ecosystem carbon and nutrient budget. Marine Ecology Progress Series 151: 43-53.

- 1  
2  
3 Mateo MA, Sanchez-Lizaso JL, Romero J. 2003. *Posidonia oceanica* “Banquettes”: a  
4 preliminary assessment of the relevance for meadow carbon and nutrient budgets.  
5  
6 Estuarine Coastal and Shelf Science 56: 85-90.  
7  
8  
9
- 10 Mateo MA, Cebrian J, Dunton K, Mutchler T. 2006. Carbon flux in seagrass ecosystems.  
11  
12 Larkum AWD, Orth RJ, Duarte C, editors. Seagrasses: Biology, Ecology and  
13 Conservation. Springer, the Netherlands. p.159-192.  
14  
15  
16
- 17 McAfee ST, Morgan SG. 1996. Resource use by five sympatric parrotfishes in the San  
18 Blas Archipelago, Panama. Marine Biology 125: 427-437.  
19  
20  
21
- 22 McConnaughey T, McRoy CP. 1979.  $^{13}\text{C}$  label identifies eelgrass (*Zostera marina*)  
23 carbon in an Alaskan estuarine food web. Marine Biology 53: 263-269.  
24  
25  
26
- 27 Meyer JL, Schultz ET, Helfman GS. 1983. Fish schools: an asset to corals. Science 220:  
28 1047-1048.  
29  
30  
31
- 32 Meyer JL, Schultz ET. 1985a. Migrating haemulid fishes as a source of nutrients and  
33 organic matter on coral reefs. Limnology and Oceanography 30: 146-156.  
34  
35  
36
- 37 Meyer JL, Schultz ET. 1985b. Tissue condition and growth rate of corals associated with  
38 schooling fish. Limnology and Oceanography 30: 157-166.  
39  
40  
41
- 42 Micheli F, Peterson CH. 1999. Estuarine vegetated habitats as corridors for predator  
43 movements. Conservation Biology 13: 869-881.  
44  
45  
46
- 47 Minello T. 1999. Nekton densities in shallow estuarine habitats of Texas and Louisiana  
48 and the identification of essential fish habitat. Benaka LR, editor. Fish Habitat:  
49 Essential Fish Habitat and Rehabilitation. Bethesda (Maryland): American  
50 Fisheries Society. p43-75.  
51  
52  
53  
54  
55  
56  
57  
58  
59  
60

- Moore JE, Colwell MA, Mathis RL, Black, JM. 2004. Staging of Pacific flyway brant in relation to eelgrass abundance and site isolation, with special consideration of Humboldt Bay. *California Biological Conservation* 115: 475-486.
- Nagelkerken I, Kleijnen S, Klop T, van den Brand RACJ, Cocheret de la Moriniere E, van der Velde G. 2001. Dependence of Caribbean reef fishes on mangroves and seagrass beds as nursery habitats: a comparison of fish faunas between bays with and without mangroves/seagrass beds. *Marine Ecology Progress Series* 214: 225-235.
- Nagelkerken I, Roberts CM, van der Velde G, Dorenbosch M, van Riel MC, Cocheret de la Moriniere E, Nienhuis PH. 2002. How important are mangroves and seagrass beds for coral reef fish? The nursery hypothesis tested on an island scale. *Marine Ecology Progress Series* 244: 299-305.
- Nagelkerken I, van der Velde G. 2004a. Are Caribbean mangroves important feeding grounds for juvenile reef fish from adjacent seagrass beds? *Marine Ecology Progress Series* 274: 143-151.
- Nagelkerken I, van der Velde G. 2004b. Relative importance of interlinked mangroves and seagrass beds as feeding habitats for juvenile reef fish on a Caribbean island. *Marine Ecology Progress Series* 274: 153-156.
- Ochieng CA, Erftemeijer PLA. 1999. Accumulation of seagrass beach cast along the Kenyan coast: a quantitative assessment. *Aquatic Botany* 65: 221-238.
- Ogden JC. 1980. Faunal relationships in Caribbean seagrass beds. Phillips RC, McRoy CP, editors. *Handbook of seagrass biology. An Ecosystem Perspective*, Garland STPM Press. New York. P173-198.

- Ogden JC, Ehrlich PR 1977. Behavior of heterotypic resting schools of juvenile grunts (Pomasyidae). *Marine Biology* 42: 273-280.
- Orth RJ, Heck KL, Jr, van Montfrans J. 1984. Faunal communities in seagrass beds: a review of the influence of plant structure and prey characteristics on predator-prey relationships. *Estuaries* 7: 339-350.
- Orth, RJ, van Montfrans J. 1990. Utilization of marsh and seagrass habitats by early stages of *Callinectes sapidus*: a latitudinal perspective. *Bulletin of Marine Science* 46: 126-144.
- Orth, RJ, Carruthers TJB, Dennison WC, Duarte CM, Fourqurean JW, Heck KL Jr, Hughes AR, Kendrick GA, Kenworthy WJ, Olyarnik S, Short FT, Waycott M, Williams SL. 2006. A Global Crisis for Seagrass Ecosystems. *Bioscience* 56: 987-996.
- Ott J, Maurer L. 1977. Strategies of the energy transfer from marine macrophytes to consumer levels: the *Posidonia oceanica* example. Keegan BF, O`Ceidigh P, Boaden PJS, editors. *Biology of Benthic Organisms*. Pergamon Press, New York. p493- 502.
- Ott J. 1980. Growth and production in *Posidonia oceanica* (L.) DELILE. P.S.Z.N. I: *Marine Ecology* 1: 47-64.
- Overholtzer KL, Motta PJ 1999. Comparative resource use by juvenile parrotfishes in the Florida Keys. *Marine Ecology Progress Series* 177: 177-187.
- Pacific Flyway Council. 2002. Pacific Flyway management plan for Pacific brant. Pacific Flyway Study Committee. U.S. Fish and Wildlife Service, Portland, OR. 40 p. + appendices.

- Pergent G, Romero J, Pergent-Martini C, Mateo MA, Boudouresque CF. 1994. Primary production, stocks, and fluxes in the Mediterranean seagrass *Posidonia oceanica*. Marine Ecology Progress Series 106: 139-146.
- Persson L, Bengtsson J, Menge BA, Powe, ME. 1996. Productivity and consumer regulation-concepts, patterns, and mechanisms. Polis, G, Winemiller, KO, editors. Food Webs, Chapman & Hall, New York. p396-434.
- Peterson CGJ. 1918. The sea bottom and its production of fish food. A survey of the work done in connection with the valuation of the Danish waters from 1883-1917. Reports Danish Biological Station 25: 1-62.
- Polis GA, Strong DR. 1996. Food webs complexity and community dynamics. American Naturalist 147: 813-846.
- Polunin NVC. 1996. Trophodynamics of reef fisheries productivity. Polunin NVC, Roberts CM, editors. Reef Fisheries. Chapman and Hall, London. p113-135.
- Randall J. 1965. Grazing effect on seagrasses by herbivorous reef fish in the West Indies. Ecology 46: 255-260.
- Randall J. 1967. Food habits of reef fishes of the West Indies. Studies in Tropical Oceanography 5: 665-847.
- Robertson AI, Lucas JS. 1983. Food choice, feeding rates, and the turnover of macrophytes biomass by a surf-zone inhabiting amphipod. Journal of Experimental Marine Biology and Ecology 72: 99-124.
- Roest AI. 1993. Ground squirrels feeding on eelgrass. California Fish & Game 79: 85-86.

- Rose MD, Polis GA. 1998. The distribution and abundance of coyotes: the effects of allochthonous food subsidies from the sea. *Ecology* 79: 998-1007
- Schindler DE, Scheuerell MD, Moore JW, Gende SM, Francis TB, Palen WJ. 2003. Pacific salmon and the ecology of coastal ecosystems. *Frontiers in Ecology and the Environment* 1: 31-37.
- Simenstad CA, Fresh KL, Salo EO. 1982. The role of Puget Sound and Washington coastal estuaries in the life history of Pacific salmon: an unappreciated function. Kennedy VS, editor. *Estuarine Comparisons*. Academic Press, Inc. p343-364,
- Simenstad CA, Wissmar, RC. 1985.  $\delta^{13}\text{C}$  evidence of the origins and fates of organic carbon in estuarine and nearshore food webs. *Marine Ecology Progress Series* 22: 141-152.
- Starck W A II, Schroeder RE. (eds.) 1971. Investigations on the gray snapper, *Lutjanus griseus*. *Studies in Tropical Oceanography* # 10. Coral Gables, FL, 224 pgs.
- Suchanek TH, Williams SL, Ogden JC, Hubbard DK, Gill LP. 1985. Utilization of shallow-water seagrass detritus by Caribbean deep sea macrofauna: del C-13 evidence. *Deep-Sea Research* 32: 201-214.
- Thayer, GW, Wolfe DA, Williams RB. 1975. The impact of man on seagrass systems. *American Scientist* 63:288-296.
- Thayer GW, Fonseca MS, Kenworthy WJ. 1984. Restoration of seagrass meadows for enhancement of nearshore productivity. Chao NL, Kirby-Smith W, editors. *Proceedings International Symposium of Utilization of Coastal Ecosystems: Planning, Pollution and Productivity*. Rio Grande, Brazil. p259-278.

- Thresher RE, Nichols PD, Gunn JS, Bruce BD, Furlani DM. 1992. Seagrass detritus as the basis of a coastal planktonic food chain. *Limnology and Oceanography* 37: 1754-1758.
- Turner RE. 1977. Intertidal vegetation and commercial yields of penaeid shrimp. *Transactions of the American Fisheries Society* 106: 411-416.
- Valentine JF, Heck KL Jr. 1993. Mussels in seagrass beds: their influence on macroinvertebrate abundance and production and macrophyte biomass in the northern Gulf of Mexico. *Marine Ecology Progress Series*. 96: 63-74.
- Valentine JF, Heck KL Jr. 1999. Seagrass herbivory: evidence for the continual grazing of marine grasses. *Marine Ecology Progress Series* 176: 291-302.
- Valentine JF, Heck KL Jr. 2005. Perspective review of the impacts of overfishing on coral reef food web linkages. *Coral Reefs* 24: 209-213.
- Valentine JF, Duffy JE. 2006. The central role of grazing in seagrass ecosystems. Larkum AWD, Orth, RJ, Duarte CM, editors. *Seagrasses: Biology, Ecology and Conservation*. Springer, The Netherlands. p463-501.
- Valiela I, Rutecki D, Fox S. 2004. Salt marshes: biological controls of food webs in a diminishing environment. *Journal of Experimental Marine Biology and Ecology* 300: 131-159.
- Vetter EW. 1994. Hotspots of benthic production. *Nature* 372: 47.
- Vetter EW. 1998. Population dynamics of a dense assemblage of marine detritivores. *Journal of Experimental Marine Biology and Ecology* 226: 131-161.

1  
2  
3 Waterbury JB, Calloway CB, Turner RD. 1983. A cellulolytic nitrogen-fixing bacterium  
4  
5 cultured from the gland of Deshayes in shipworms (Bivalvia: Teredinidae).  
6  
7  
8 Science 221: 1401-1403.  
9

10 Wernberg T, Vanderklift MA, How J and Lavery PS. 2006 Export of detached  
11  
12 macroalgae to seagrass beds from adjacent reefs. *Oecologia* 147:692-701.  
13  
14

15 Williams SW, Heck KL Jr. 2001. 'Seagrass Communities'. Bertness M, Gaines S, Hay M,  
16  
17 editors. *Marine Community Ecology*. Sinauer Press, Sunderland, Mass. P317-  
18  
19 337.  
20  
21

22 Wolff T. 1980. Animals associated with seagrass in the deep sea. Phillips RC, McRoy  
23  
24 CP, editors. *Handbook of Seagrass Biology*. Garland STPM Press, New York.  
25  
26 p199-224.  
27  
28

29 Ziegler S, Benner R. 1999. Dissolved organic carbon cycling in a subtropical, seagrass-  
30  
31 dominated lagoon. *Marine Ecology Progress Series* 188: 51-62.  
32  
33

34 Zieman JC, Thayer G, Robblee M, Zieman R. 1979. Production and export of seagrasses  
35  
36 from a tropical bay. Livingston RJ, editor. *Ecological Processes in Coastal and*  
37  
38 *Marine Systems*. Plenum Press, New York. p21-33.  
39  
40

41 Zieman JC, Iverson RL, Ogden JC. 1984. Herbivory effects on *Thalassia testudinum*  
42  
43 leaf growth and nitrogen content. *Marine Ecology Progress Series* 15: 151-158.  
44  
45  
46  
47  
48  
49  
50  
51  
52  
53  
54  
55  
56  
57  
58  
59  
60

1  
2  
3  
4  
5  
6  
7  
8  
9  
10  
11  
12  
13  
14  
15  
16  
17  
18  
19  
20  
21  
22  
23  
24  
25  
26  
27  
28  
29  
30  
31  
32  
33  
34  
35  
36  
37  
38  
39  
40  
41  
42  
43  
44  
45  
46  
47  
48  
49  
50  
51  
52  
53  
54  
55  
56  
57  
58  
59  
60

**List of Figures:**

Figure 1. Conceptual diagram detailing trophic transfers from seagrass meadows as well as connectivity between seagrass meadows and marine and terrestrial habitats in a) tropical and b) temperate regions

Figure 2. Location of studies in Table 1 that provide quantitative estimates of both the magnitude and percentage of exported seagrass production

For Peer Review

Table 1. References containing estimates of both the amounts ( $\text{gCm}^{-2}\text{y}^{-1}$ ) and percentages of net primary productivity (NPP) exported from various types of seagrass meadows. (These data are the actual values used to plot Fig. 3 (C and D) of Mateo and others 2006).

Source	Seagrass species	$\text{gCm}^{-2}\text{y}^{-1}$ exported	%NPP exported
Bach and others 1986	<i>Zostera marina</i>	43.80	6.74
Bach and others 1986	<i>Z. marina</i>	9.12	1.70
Bach and others 1986	<i>Z. marina</i>	73.00	20.00
Bach and others 1986	<i>Z. marina</i>	7.30	1.07
Bach and others 1986	<i>Z. marina</i>	24.45	7.00
Cebrian and others 2000	<i>Cymodocea nodosa</i>	83.95	29.11
<u>Fry and Virsntein 1988</u>	<i>Syringodium filiforme</i>	124.10	47.24
<u>Greenway 1976</u>	<i>Thalassia testudinum</i>	87.60	9.99
Josselyn and others 1983	<i>T. testudinum</i>	11.68	24.75
Josselyn and others 1983	<i>T. testudinum</i>	15.33	3.89
Kilar and Norris 1988	<i>T. testudinum</i>	135.05	48.23
Kirkman and Reid 1979	<i>Posidonia australis</i>	18.61	11.60
Mateo and Romero1997	<i>Posidonia oceanica</i>	24.00	7.32
Mateo and Romero1997	<i>P. oceanica</i>	5.00	4.55
Ott 1980	<i>P. oceanica</i>	682.55	54.92
Ott and Maurer 1977	<i>P. oceanica</i>	175.20	31.55
Pergent and others 1994	<i>P. oceanica</i>	40.15	21.09
Zieman and others 1979	<i>Thalassia testudinum</i>	4.01	1.02
Zieman and others 1979	<i>Syringodium filiforme</i>	36.50	77.34

Figure 1.

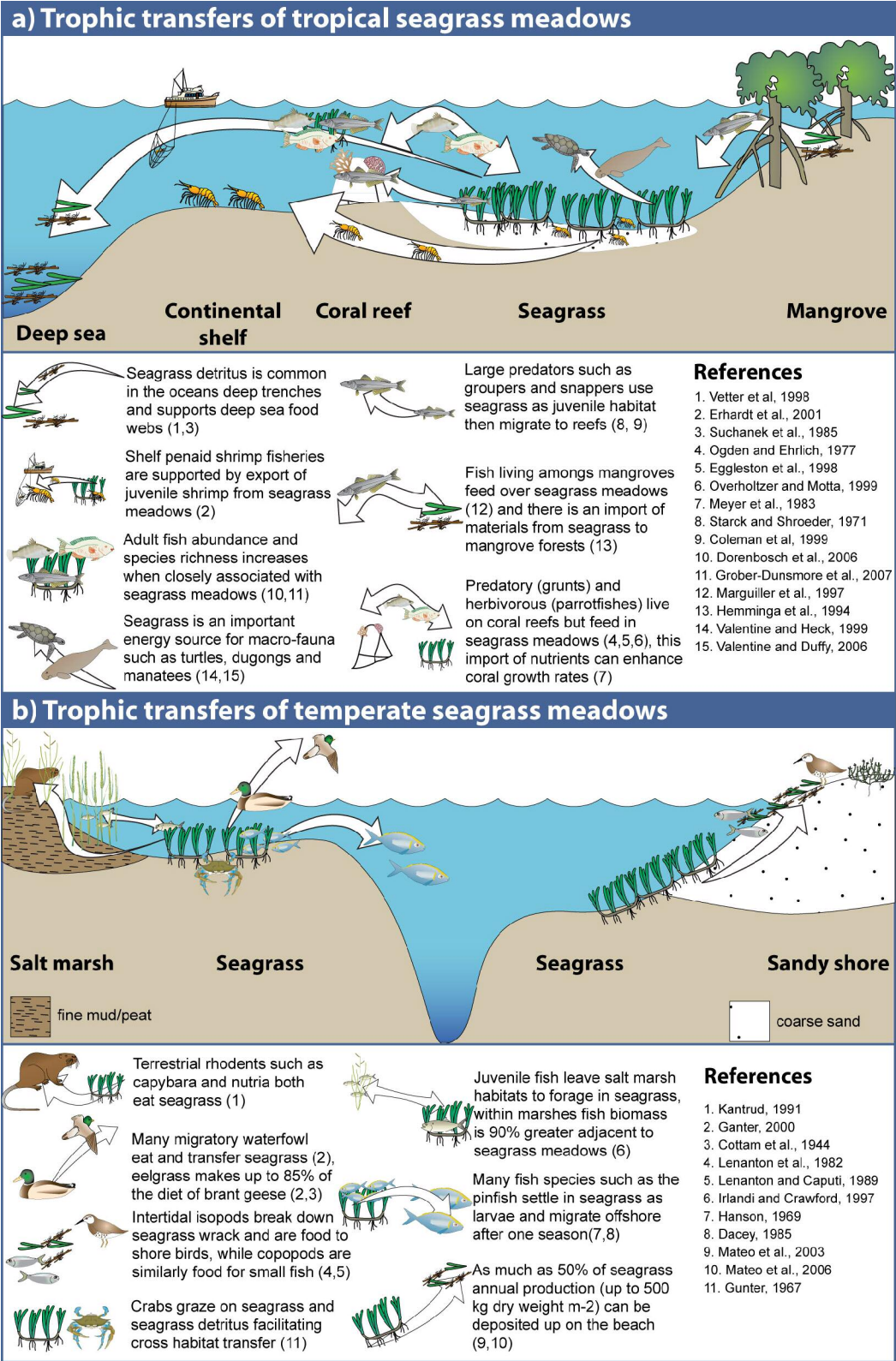


Figure 2.

